

# Topographic Maps

Unit 1

# Topographic Maps

Show the changes in the elevation of the Earth.

Examples of features: hills, rivers, valleys...



UNITED STATES  
DEPARTMENT OF THE INTERIOR  
GEOLOGICAL SURVEY

STATE OF PENNSYLVANIA  
REPRESENTED BY THE  
DEPARTMENT OF THE INTERIOR  
TOPOGRAPHIC AND GEOLOGICAL SURVEY

BROAD TOP QUADRANGLE  
HARRISBURG, PA.



Topography by C.W. Goodlove, J.K. Bailey,  
R.F. Hanke and W.A. Fisher;  
Photography by J. H. Starnes and  
F. W. Smith; State Highway Department  
compiled in 1926-30;  
REPRODUCTION BY THE GEOLOGICAL SURVEY  
BEDFORD, INTEROFFICE PPS 5, 6.



FOR SALE BY U. S. GEOLOGICAL SURVEY, WASHINGTON 25, D. C.  
A FOLDER DESCRIBING TOPOGRAPHIC MAPS AND SYMBOLS IS AVAILABLE ON REQUEST

PROCESSED BY THE  
GEOLOGICAL SURVEY  
WASHINGTON, D. C.

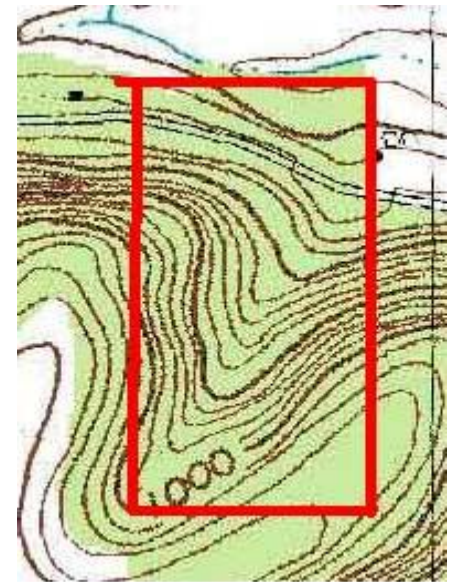
MAP POC-1  
General, L.S. 13  
P.C.I. 1.303  
August, TX 78137-330

214424216  
MPS PRE-1945 TOPO PA BROAD TOP



# Contour Lines

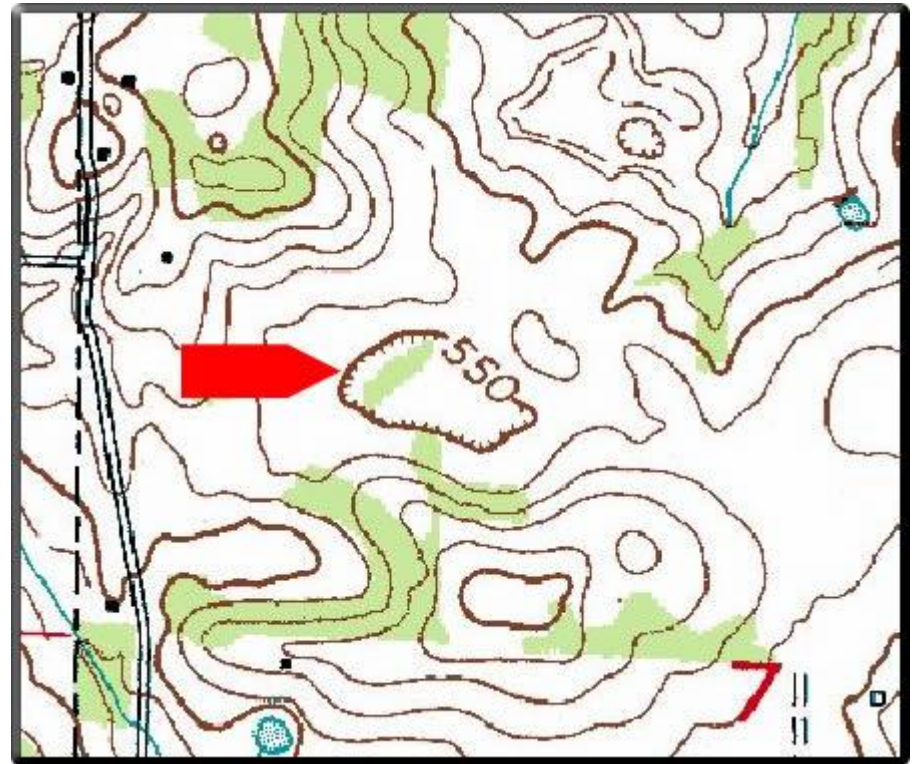
- Connect all the points at EQUAL ELEVATION.
- Lines never cross!
- The closer the lines, the STEEPER THE ELEVATION.
- “V” lines indicate a valley
- “V” lines always point upstream (rivers flow from high to low elevation)
- CONTOUR LINES indicate hills or mountains.



# Depression Contours

- Show a DECLINING ELEVATION IN THE SURROUNDING LANDSCAPE.
- Are dashed WITH HACHURES

EXAMPLES: VOLCANIC CRATERS AND MINES



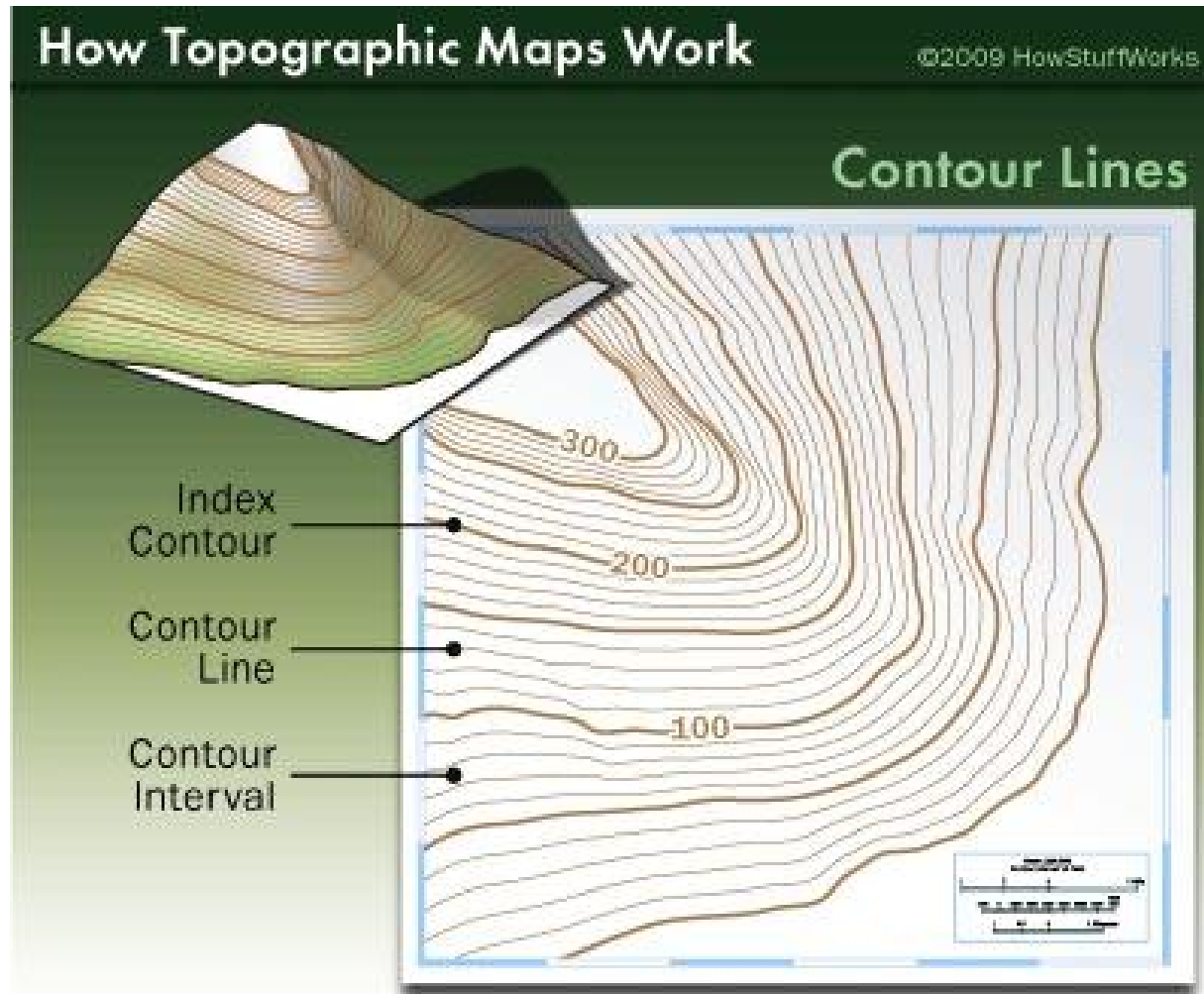
# Contour Interval

- The difference in elevation between TWO SIDE-BY-SIDE CONTOUR LINES
- **Dependent upon terrain**
  - **Mountains – close together!**

# Contour Index

- Every FIFTH contour line is in BOLD and labeled with the elevation number
- Difference between 2 contour index lines divided by 5 = contour interval

# Contour Lines





# Relief

- Difference between the HIGHEST AND LOWEST CONTOUR LINE.
- Example: 150 ft. (highest) - 50 feet (lowest) = 100 feet (relief)

# Practice

Practice 1-6 on your notes packet.

After you are done, grab an iPad and pick up Unit 2 Vocabulary. Go to [www.nosborne.com](http://www.nosborne.com) then Environmental Science. Click on Vocabulary, then Unit 2 Vocabulary Quizlet to start on definitions.

# Topographic Map Lab