

Unit 1 Notes

CHARACTERISTICS OF LIFE + BIOMOLECULES

- Scientific method to answer questions

* Hypothesis: educated guess

Experiment: tests hypothesis

Experimental group: receives the treatment

Control group: no treatment "baseline"

Independent variable: "stands alone"

time, pH, temperature

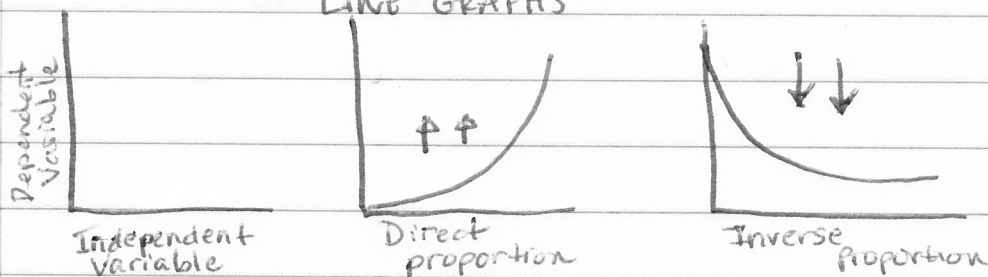
Dependent variable: depends on IV

Responds to treatment

Communicate results

- Tables

- LINE GRAPHS



- CIRCLE GRAPHS

