



Saving Sam
Lab

REVIEW

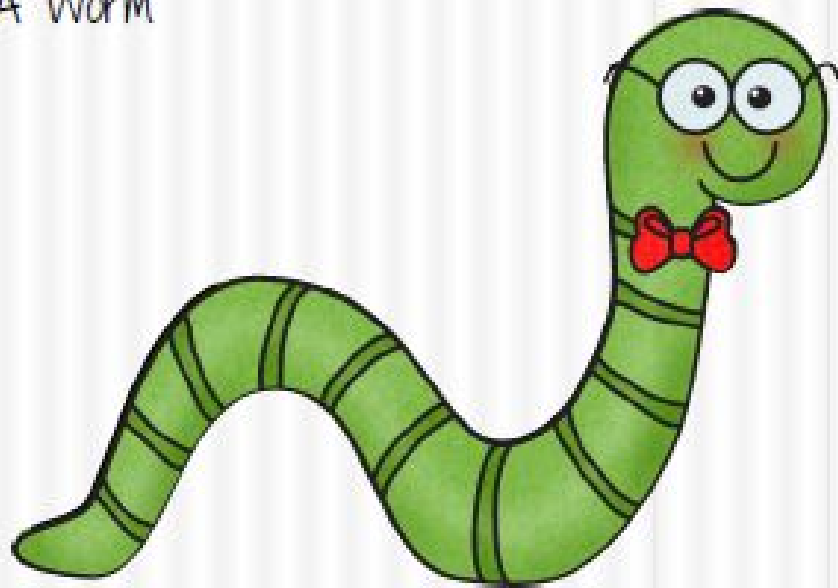
* Write a short definition for each term based on what you know...

- Hypothesis

- Conclusion

Introducing Sam

* Sam is a nightcrawler, aka A Worm



Sam's Story

* Sam has been spending his summer boating on the great lakes. However, he's not too bright (after all, the brains of worms are pretty small). He's never learned how to swim, and he never wears his life preserver. The worst has happened! His boat has capsized and he's stuck! Fortunately, his life preserver is in the boat, but unfortunately he does not know how to reach it without falling off and drowning.



Your Task & Materials

Use what you know about the scientific method to SAVE SAM!!

MATERIALS: (Please do not EAT Sam or his life preserver)

- * Gummy Worm
- * Gummy Life Preserver
- * 1 Plastic Boat (Cup)
- * 4 Paper Clips



Set-Up

Sam sits on the inverted cup. The cup sits covering the preserver on the tabletop. No real water is involved.



Rules

- 1) Work with your partner to "Save Sam"
- 2) Sam, the boat, the life preserver can only be touched with the paperclips. You may **NOT** use your hands.
- 3) On your lab sheets, please make sure to follow the directions informations on how pictures and data should be recorded.



Observations & Analysis

- * What happened when you attempted to Save Sam?
- * Problems you faced?
- * What worked well? What didn't?
- * What is the best method to Save Sam?