

Dichotomous Keys

Life is _____ at all levels from cells to biosphere

But what if we find things we don't know and we want to know what they are?

We use something's characteristics in a similar way using...

Dichotomous Keys

- A _____ key is a tool that allows the user to determine the identity of items in the natural world based on the items _____
- "Dichotomous" means "divided into two parts" Greek origin
 - dichotomous keys always give _____ distinct _____ in each step, often they are opposites
 - Black/white; good/evil; pointed/rounded

How to use a dichotomous key?

Choose only _____ creature at a time.

Read steps 1a and 1b

Decide which statement is _____

Then _____ the directions after that step.

Keep going until you come to a step that gives you the creature's name.

Choose a new creature and start at step 1a and 1b again. Continue until you find the creature's name.

1. a. wings covered by an exoskeleton – go to step 2
b. wings freely observed – Go to step 3

2. a. body has a round shapeladybug, a red beetle with black spots
b. body has an elongated shapegrasshopper, a green insect that hops

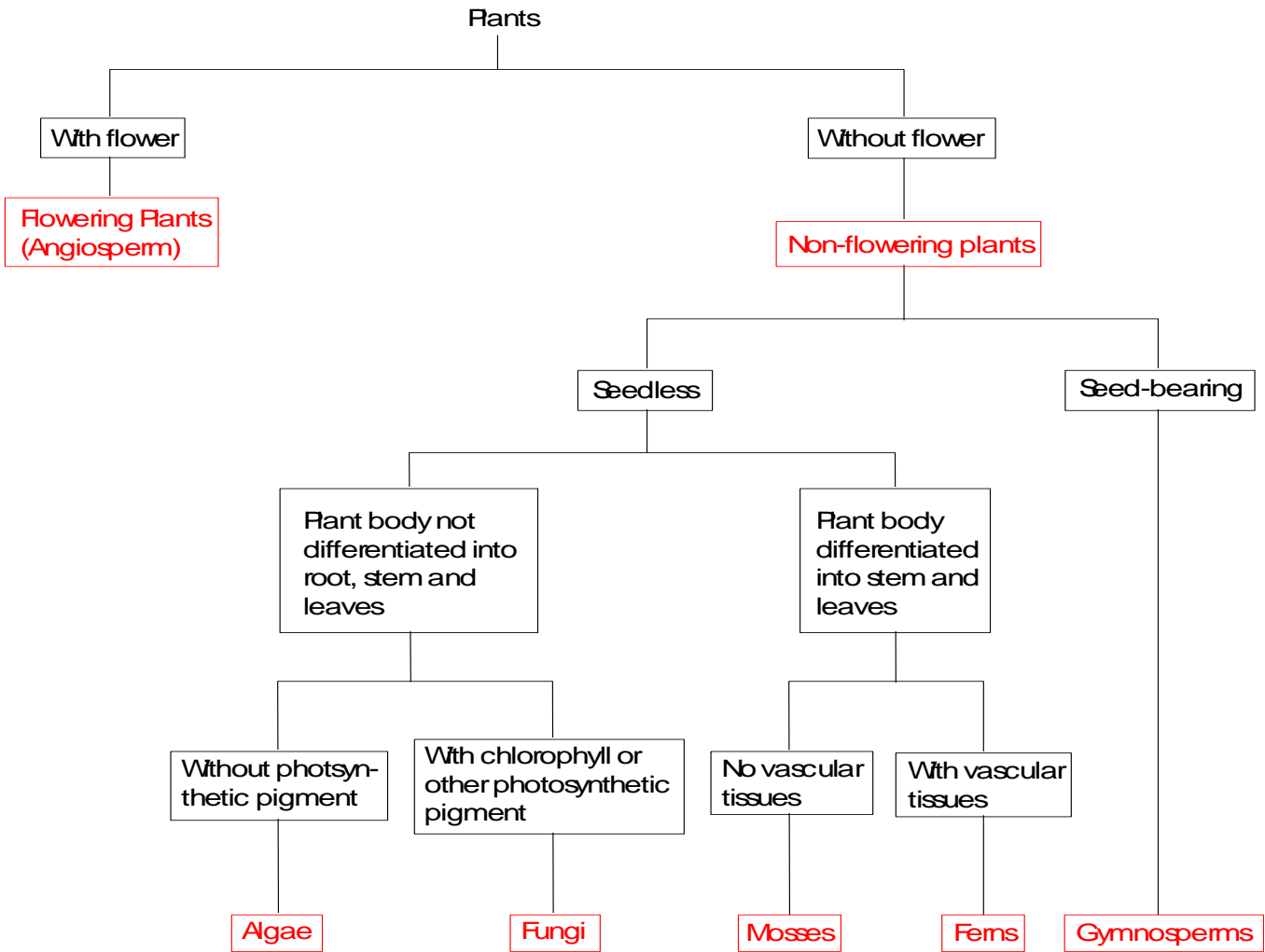
3. a. wings point out from the side of the bodydragonfly, an insect that is 10- 15 cm long and lives in marshes
b. wings point to the posterior of the bodyhousefly, a flying insect with red eyes and an annoying buzz

What if I needed to make a key:

- Use constant _____ rather than variable ones. (Flowers change with the seasons)
- Use _____ rather than terms like "large" and "small".
 - Make the choice a _____ one
 - something "is" instead of "is not".
- Ex: snake ears are internal only
 - If possible, start both choices of a pair with the same word or item.
 - the body is "round" vs the body is "square"
- Finish the dichotomous key with a full _____ of the organism

Dichotomous key

--the dichotomous key can also be expressed in a _____ form



A Familiar Dichotomous Division:

Biotic

-
-
-
-
-
-

Abiotic

- Not all 7 characteristics